

Hospital Electronic Management System

Unique Window
to Connect Patient and Hospital



March 6, 2010

Hospital Management System

- The Hospital Electronic Management System is a web-based electronic database management system.
- The system is a fundamental part of a journey to transition the current paper-based information record system to an electronic information management system.
- The system provides a unique method for hospitals to communicate with patients and record their activities.
- The system captures day-to-day hospital activities and represents valuable hospital resources such as experience, knowledge and memories.

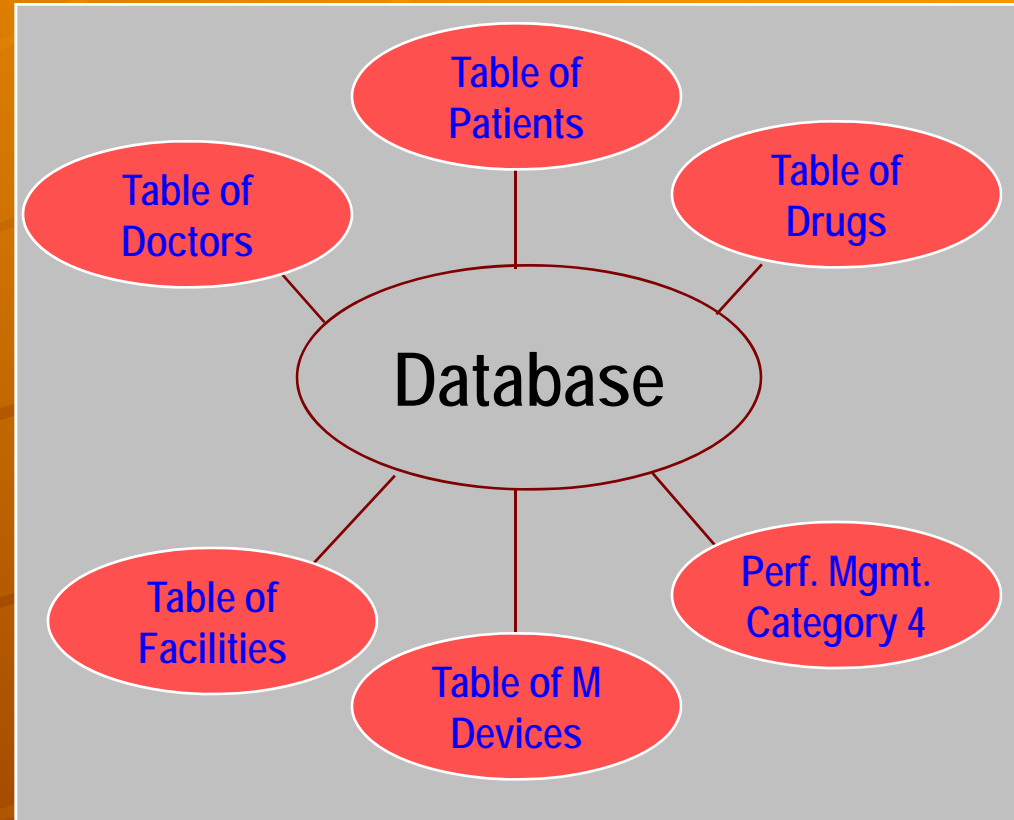
Doctor's Best Practices

- The system allows doctors to access patient complex historic profile, and check patient allergies, illnesses, and treatments.
- The system enables doctors to choose best treatment solution from multiple-systems, drugs and treatments.
- The system provides optimum health-care by better utilizing hospital facilities and resources.
- The system shares treatment information effectively, and uses doctor's time efficiently.
- The system enhances health-care, provides alert for outpatient abnormal diseases.

Strategic Solution & Decision

- The system provides a strategic solution for creating an electronic recording system that includes information on patients, hospital resources, Prescription drugs, and medical devices.
- The system improves hospital experts and doctors scheduling system and better utilizes hospital facilities and resources.
- The system evaluates recorded diagnosis data and monitors patients, diseases, drugs activities and alerts patient flow and disease outbreaks.
- The system supports the research and analysis and provides all the resources and information available to help hospitals make sound decisions.

System Logic Model



A unique system for connecting and recording patient and hospital activities

Database Connection

Hospital Supporting Tables

Table of patient Information

Table of hospital employees

Table of hospital facilities

Table of medical devices

Table of hospital categories

Table of drugs supplied by hospital

Table of finance

Hospital Activity Recording Tables

Record of patient registration

Record of patient category

Record of patient description

Record of doctor observations

Record of doctor diagnosis

Record of doctor treatment

System Database

Outpatient Process



1. Registration:

- Table of patient information;
- Enter table of registration;
- Table of category,
- Table of doctors,
- Table of facilities.

2. Doctor Diagnosis:

- Table of patient description,
- Table of doctor observation,
- Table of doctor diagnosis,
- Table of doctor judgment,
- Table of prescription,
- Table of tests,
- Table of recommendation.

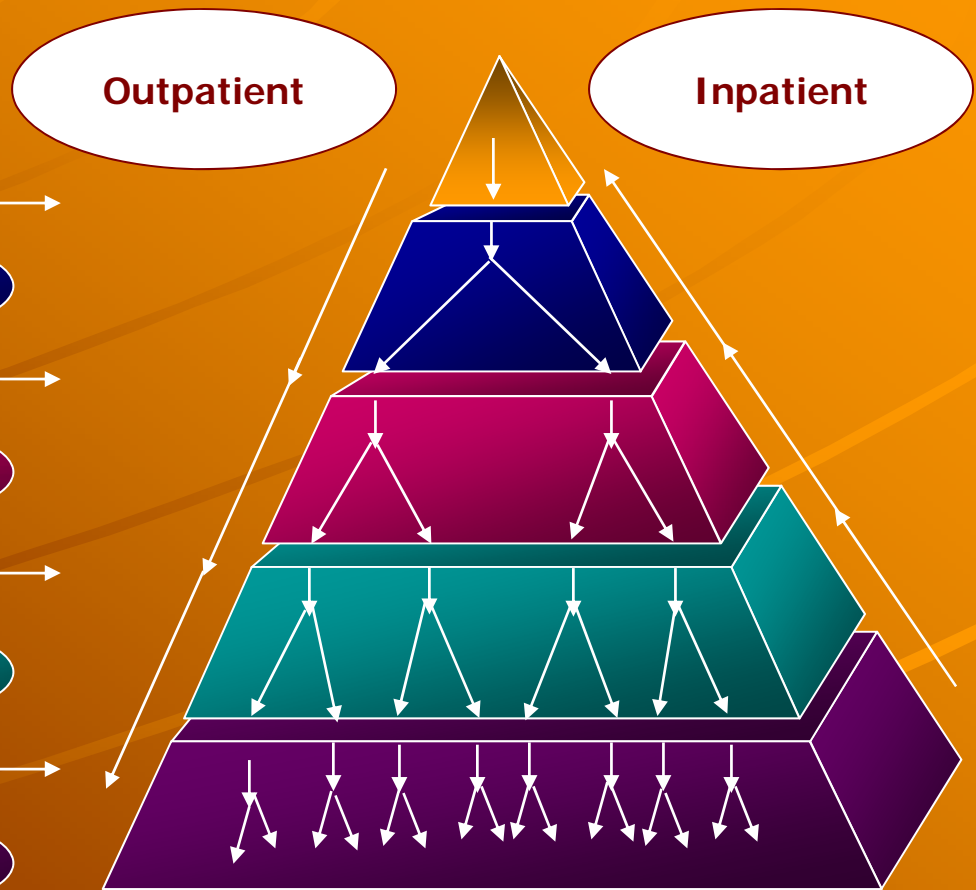
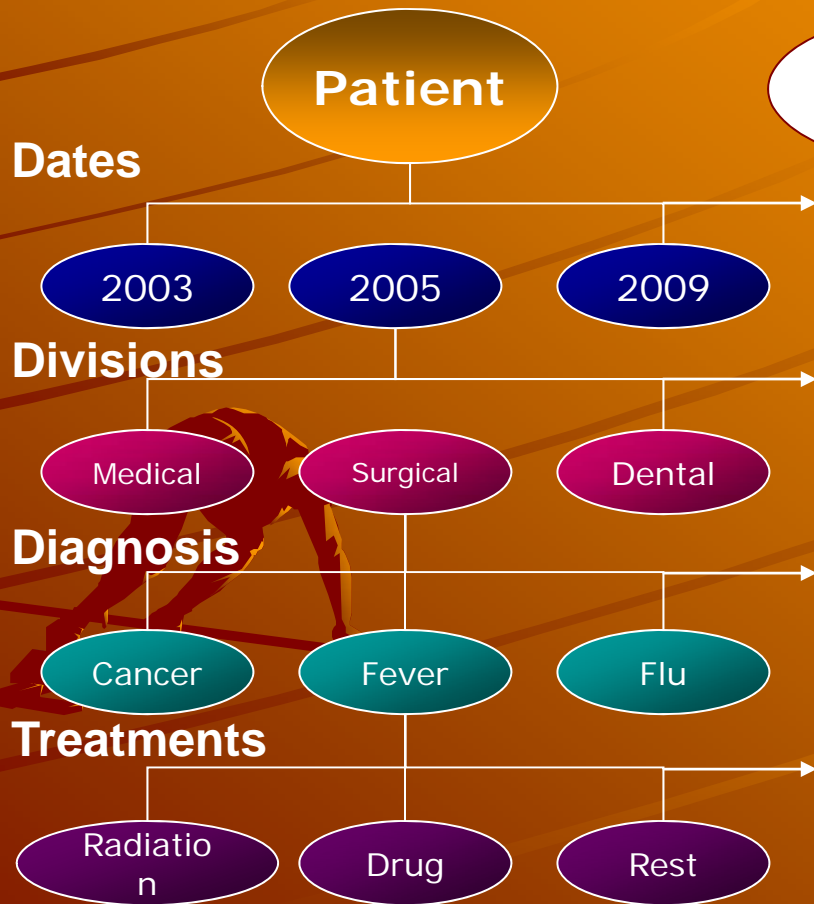
3. Finance Payment:

- Table of drug unit price;
- Table of test unit price;
- Table of total payment,
- Table of payment methods (by cash, insurance, or other payment methods).

4. Drug Store:

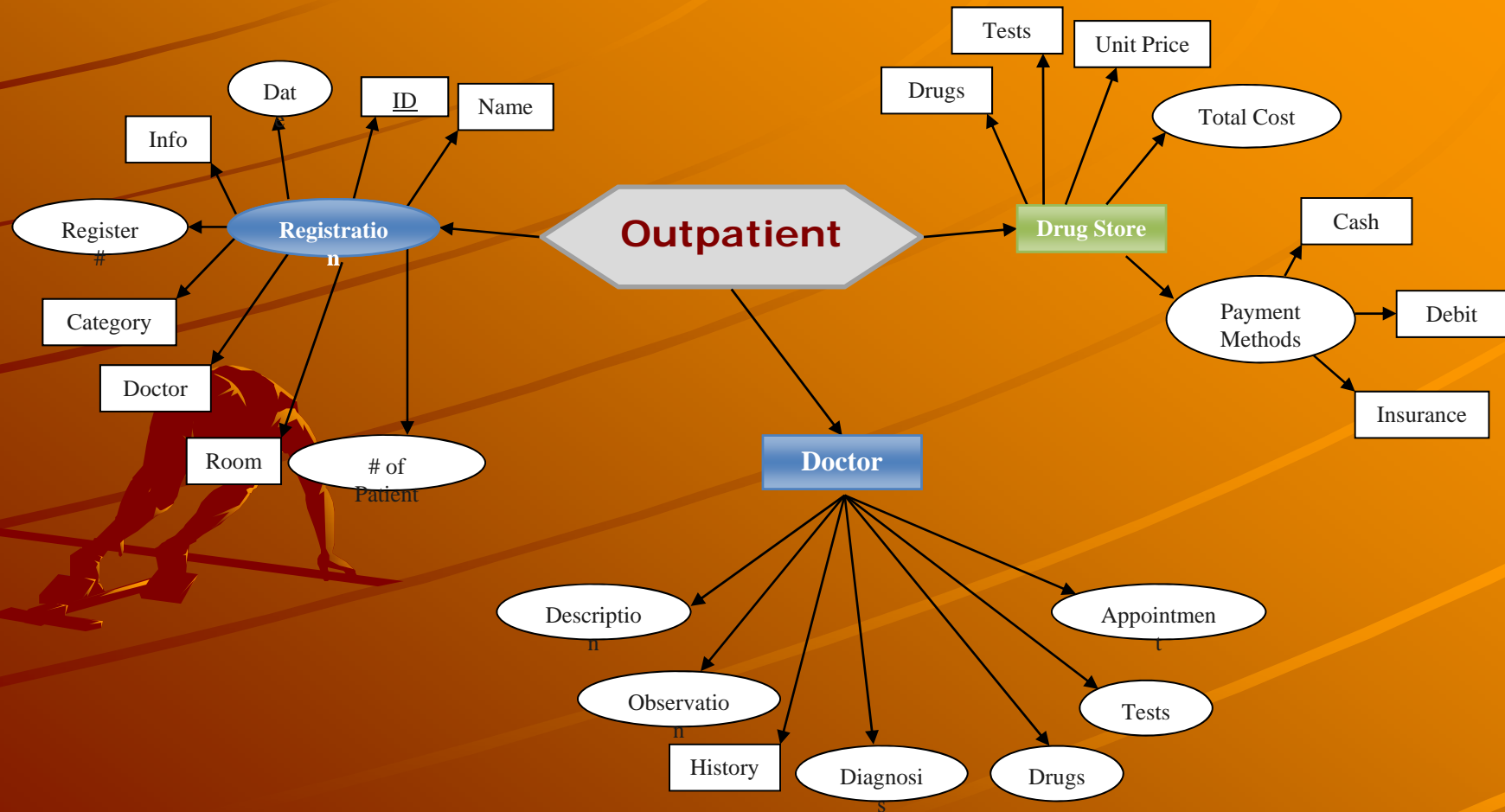
- Table of drugs in store,
- Table of drug purchased,
- Table of drug flow,
- Table of top 10 drug used,
- Table of prescription drugs,
- Table of other drugs.

Patient Hospitalization History



Align patient symptoms, diagnoses, treatments and recoveries

Outpatient Connection Model



Effectiveness and Benefits

Learn and share knowledge and experience for better services

Present experience, knowledge and memories

Improve hospital effectiveness and efficiency

System captures, creates, collects and maintains hospital day-to-day activities and decision-making processes

Report the flow of patients and monitor disease outbreak

Analyze data for better decision making

Enhance operational management



Report Hospital Activities

Resource Assessment

- Rooms available for outpatients & inpatients
- Rooms available for emergency
- Available experts and doctors
- Available support staff

Medical Devices Assessment

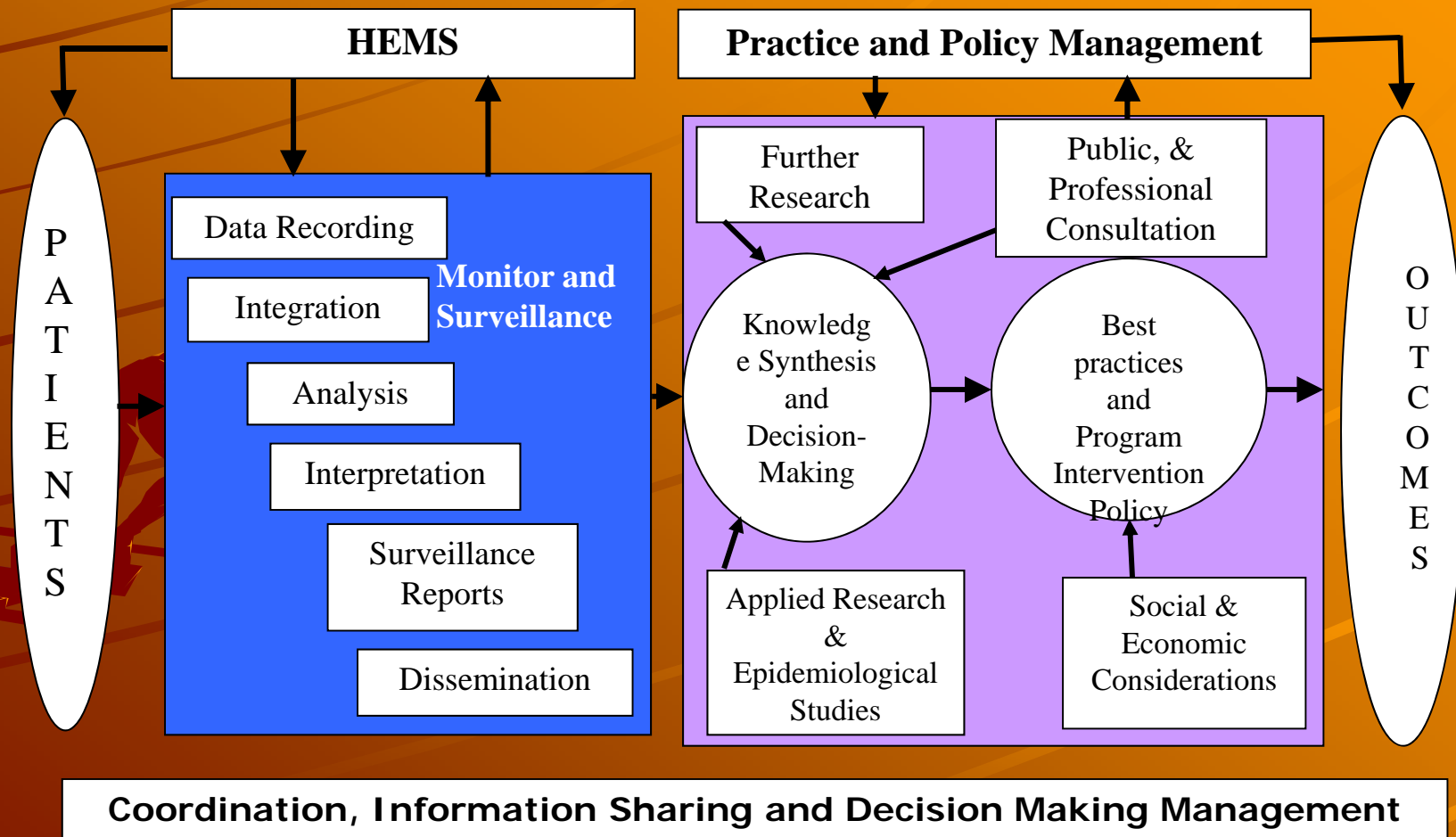
- Available medical devices
- Available test equipment

Performance Measurement

- Patients flow report
- Drug flow report
- Disease flow report
- Disease outbreak alert
- Sound treatment decision
- Effective policy making

Helps prioritize actions, assess performance and report on accountability.

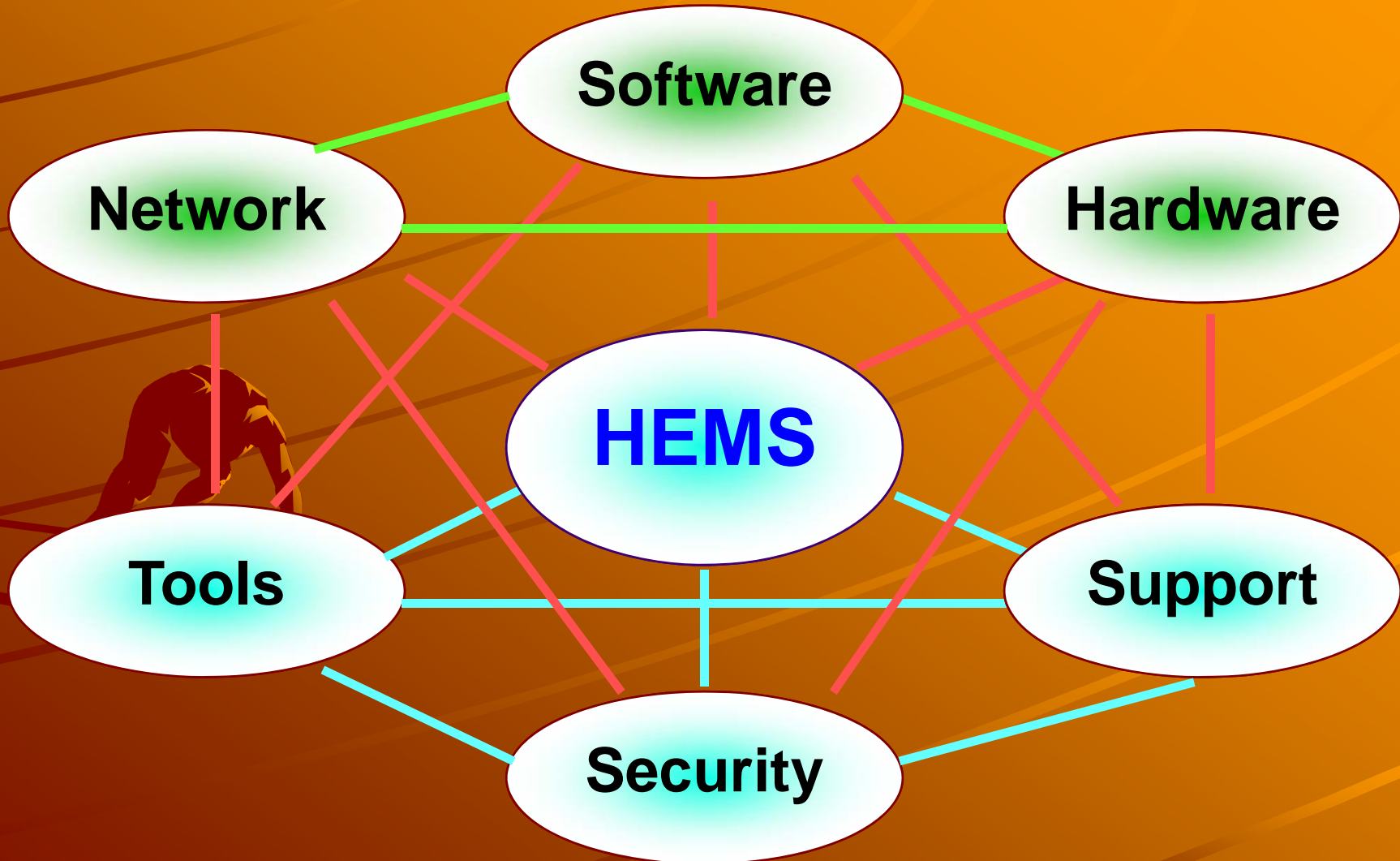
Monitor and Decision-Making



Hospital Performance Report



System Reliability



Contact Information

Wenqin Shao

*950 Lovitt Road
Ottawa, Ontario, K2B 1A7*

*Tel:613-761-8118
Fax: 613-726-3689*

Wenqin_shao@siwyc.com

